

# SERVICE KIT

# 637016

For Repair of Models 612056, 650057, 650059, 662007, 662008, Lower Pump Ends.

RELEASED: 8-10-67  
REVISED: 3-28-94  
(REV. C) IPP/PSE  
FORM 4704

## DISASSEMBLY

NOTE: All threads are right handed.

CAUTION: Do not mar finish on (20) tube.

Clamp pump assembly in a vise on either the motor base assembly, or material outlet assembly or air inlet assembly.

Remove four screws and air motor cover plate.

Remove three screws and washers that connect lower pump to motor base.

Separate motor assembly from lower pump assembly by pulling down on the lower pump assembly exposing the connector adapters between motor piston and material rod.

Uncouple the motor piston rod from (1) piston by placing a wrench on the machined flats of (1) piston and unscrewing 75674 retainer.

Remove (9) "O" ring.

Clamp the lower pump assembly in a vise on the (10) pump base.

CAUTION: Do Not overtighten.

Loosen (20) tube from (10) pump base with a strap wrench. Pull (20) tube off (12) or (13) piston rod assembly.

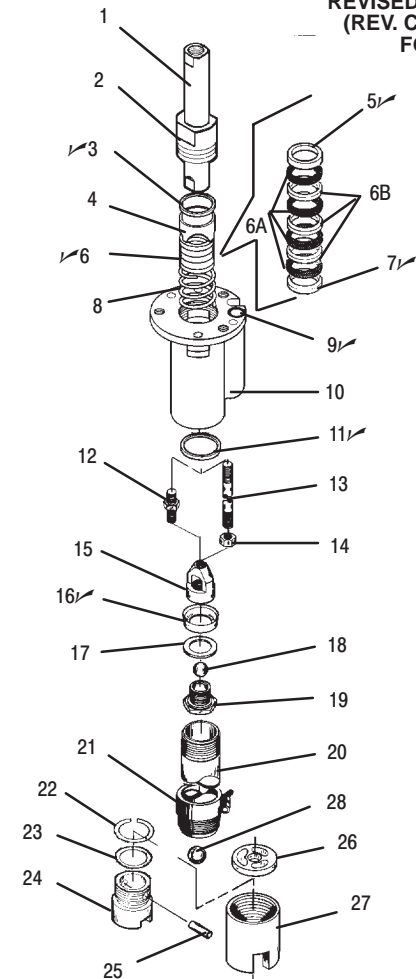
Remove (11) seal from inside (10) pump base.

Remove (1) piston and (11) or (13) piston rod assembly from (10) base by pulling down on piston rod assembly.

Vise on machined flat of (1) piston, loosen (14) nut and remove (13) piston rod assembly.

Vise on machined flat of (15) cup follower, unscrew and remove (19) inner check seat from (15) cup follower on the (11) or (13) piston rod assembly and remove (18) ball, (17) washer and (16) cup.

Vise (10) pump base. Remove (2) packing nut, (3) packing wiper, (4) packing spacer, (5) washer, (7) washer, (6) packings and (8) spring.



✓ Parts so marked are included in 637016 Kit

## SERVICE KIT PARTS

ITEM	DESCRIPTION	(QTY)	PART NO	ITEM	DESCRIPTION	(QTY)	PART NO
1	Piston	(1)	X	14	Nut	(1)	X
2	Packing Nut	(1)	X	15	Follower	(1)	X
✓3	Packing Wiper	(1)	91454	✓16	Cup	(1)	75680
4	Packing Spacer	(1)	X	17	Washer	(1)	X
✓5	Packing Washer	(1)	91456	18	Ball	(1)	X
✓6	Packing	( )	X	19	Seat	(1)	X
✓6A	Packing	(4)	73043	20	Tube	(1)	X
✓6B	Packing	(3)	73042	21	Bung Adapter	(1)	X
✓7	Packing Washer	(1)	91457	22	Snap Ring	(1)	X
8	Spring	(1)	X	23	"O" Ring	(1)	X
✓9	"O" Ring	(1)	Y179-17	24	Valve Seat	(1)	X
10	Pump Base	(1)	X	25	Pin	(1)	X
✓11	Gasket	(1)	90125-1	26	Ball Stop	(1)	X
12	Connector	(1)	X	27	Valve	(1)	X
13	Piston Rod	(1)	X	28	Ball	(1)	X

THE ARO CORPORATION • ONE ARO CENTER • BRYAN, OHIO 43506-0151

PH: (419) 636-4242 • FAX (419) 636-2115

©1994 THE ARO CORPORATION • PRINTED IN U.S.A.



Part of worldwide Ingersoll-Rand

---

## ASSEMBLY

---

Assemble with new service parts.

\_Vise (10) pump base. Push (8) spring, (6) packings and (5) and (7) washers to bottom of chamber. Screw (2) packing nut with (3) packing wiper into (10) pump base and tighten.

Note: Care must be taken in assembly of (1) piston plunger so that (6) packings are not damaged.

\_Push (1) piston down through the top of the (10) pump base, being sure not to damage packings.

\_Assemble (16) cup, (17) washer, (18) ball and screw (19) inner seat onto (15) cup follower.

\_Replace (11) seal in (10) pump base.

\_Vise on machine flats of (1) piston and screw (11) or (13) piston rod assembly into (1) piston and tighten (14) nut.

\_Apply grease or lubricant to (16) cup and slide (20) tube over (11) or (13) piston rod assembly and screw (20) tube into (10) pump base and tighten.

\_Install (9) "O" ring into (10) pump base.

\_Couple the motor piston rod to the (1) piston by placing a wrench on the machined flats of (1) piston and assemble 75674 retainer and tighten.

\_Align holes and install three washers and screws and tighten.

\_Install cover and fasten with four screws.

